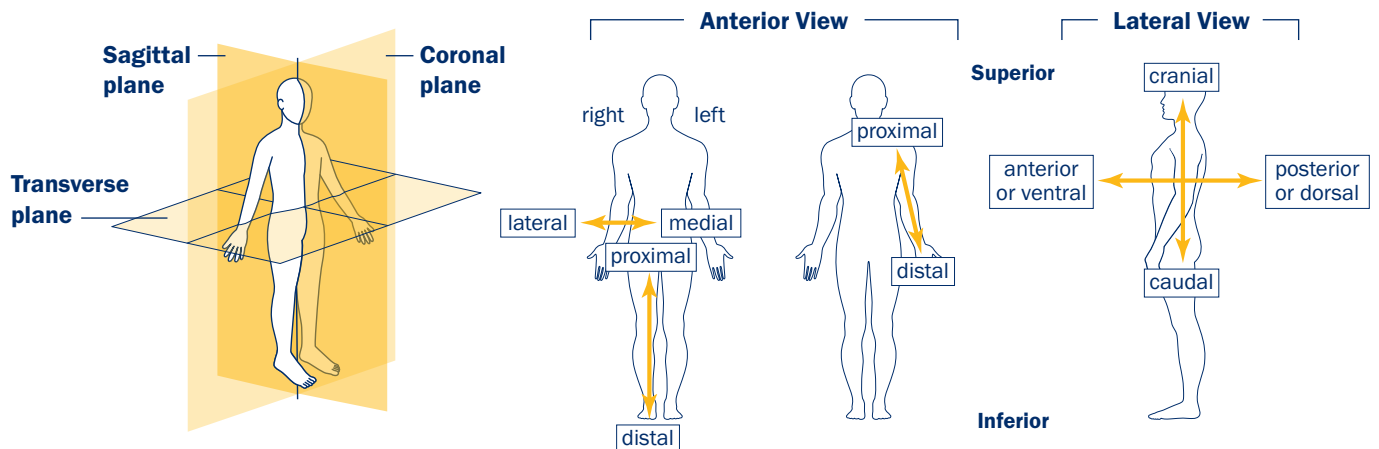
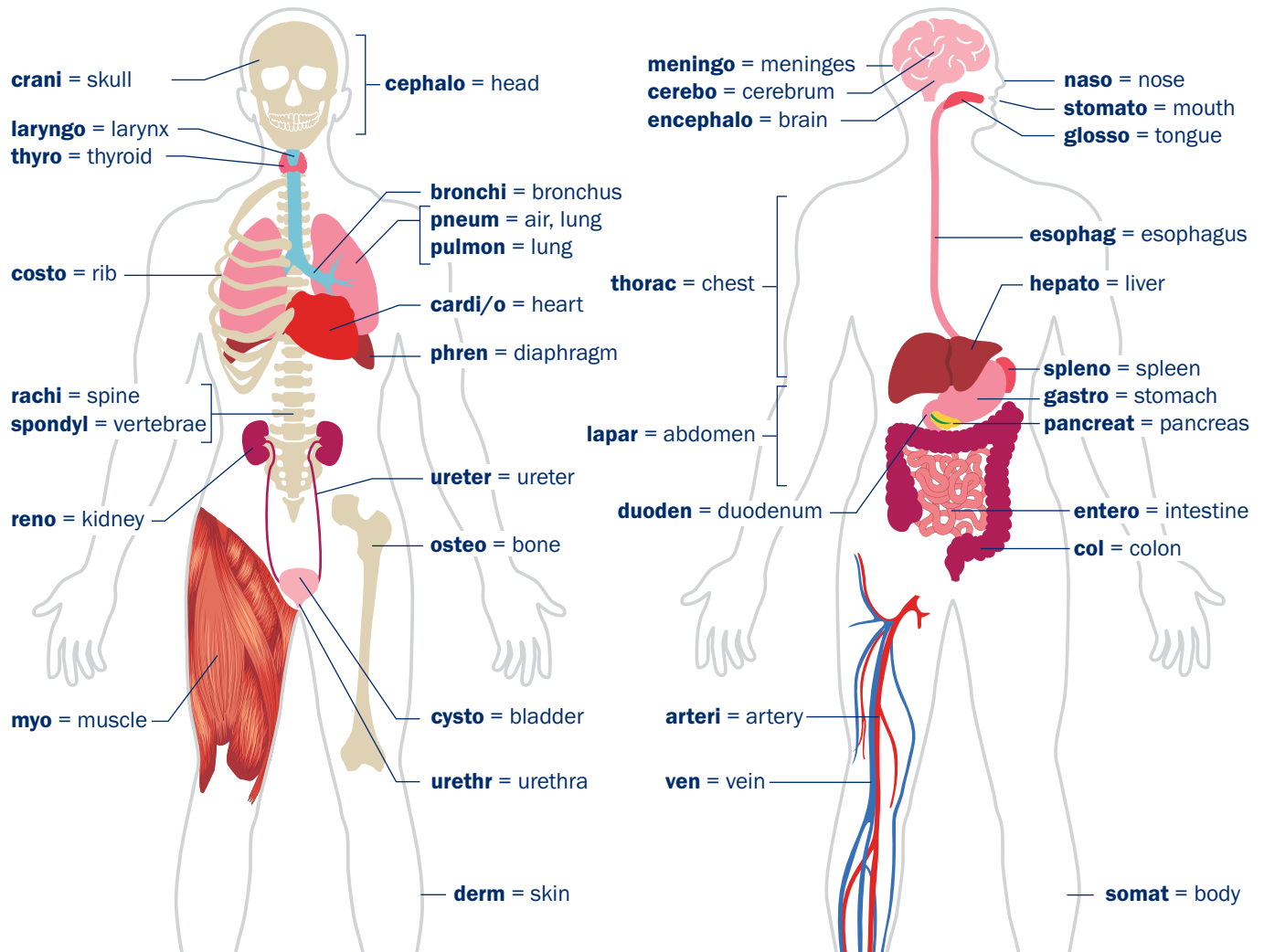


HUMAN BODY ETYMOLOGY



Common prefixes

a-/n- = without
adeno- = gland
adipo- = fat
aero- = air, gas
allo- = other
ambi- = both
angio- = vessel
ante- = before
anti- = against
arthro- = joint
athero- = fatty or pasty
auto- = self
brady- = slow
chol- = bile
chondro- = cartilage
circum- = around
con- = with
cryo- = cold
cyto- = cell
derm- = skin
dia- = through
dipso- = thirst
dis- = apart
dys- = bad, difficult
ecto- = outside
endo- = inner/within
epi- = upon

esthesi- = sensation
eu- = good
ex- = out
hemato- = blood
hemi- = half
hemo- = relating to blood
hepat- = relating to the liver
hydro- = water
hyper- = excessive
hypo- = less, under
inter- = between
intra- = within
ipsi- = same
isch- = slowed, blocked
juxta- = near
lipo- = fat
litho- = stone
macro- = large
mal- = bad, poor
micro- = small
mid- = middle
myelo- = bone marrow or spinal cord
myo- = muscle
necro- = death
neuro- = nerve
oligo- = little
ortho- = straight

osteo- = bone
oxo-/oxy- = oxygen
pan- = all
para- = near, beside
peri- = around
phlebo- = vein
pneo- = breath, respiration
pneumo- = air, lung, breath
poly- = many
post- = after
pre- = before
presby- = old age
pseudo- = false
reno- = kidney
somat- = body
spiro- = breathing
stoma- = mouth/opening
sub- = below
supra- = above
tachy- = fast
thromb- = blood clot
trans- = across
uria- = urine, urination
vaso- = duct, vessel
vascu- = blood vessel
veno- = vein

Common suffixes

-algnesia = sensitivity to pain
-algia = pain
-blast = immature
-carcinoma = cancer, epithelial
-centesis = puncture to withdraw fluid
-crine = secretion
-cyte = cell
-dipsia = thirst
-dynia = pain
-ectasis = dilated, stretched
-ectomy = cutting, removing
-edema = swelling
-emesis = vomiting
-emia = blood condition
-esthesia = feeling, sensation
-esis = condition of
-gnosia = knowing
-ia = condition

-iasis = presence of
-ism = condition
-itis = inflammation
-lepsy = seizure
-logy = study of
-malacia = softening
-megaly = enlargement
-oid = like
-oma = tumor
-osis = condition
-ostomy = surgically create an opening
-otomy = cutting into
-paresis = weakness
-pathy = disease
-penia = less, decrease
-pexy = surgical fixation
-phil/-philia = attracted to
-phagia = eating

-phylaxis = protection
-plasia = condition of formation
-plasty = surgical repair
-plegia = paralysis
-pnea = breathing
-poiesis = formation
-ptosis = drooping
-ptysis = coughing up
-rrhagia = excessive flow
-rrhaphy = suture
-rrhea = flow
-sarcoma = cancer, connective
-sclerolysis = hardening
-stalsis = contraction
-stasis = stopping
-stenosis = narrowing
-trophy = nourishment
-uria = urine